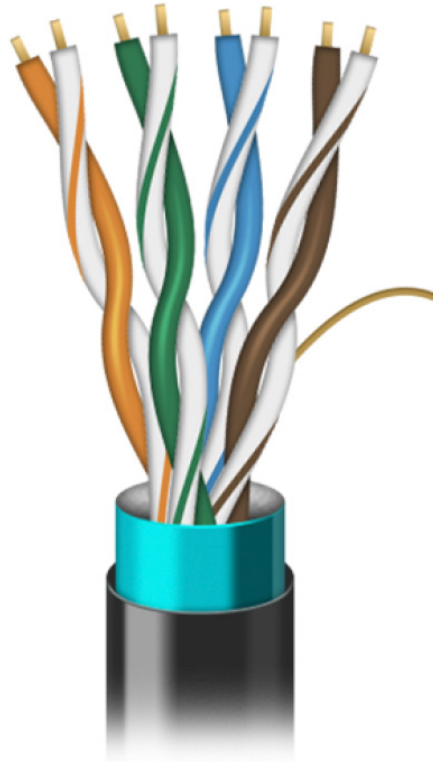




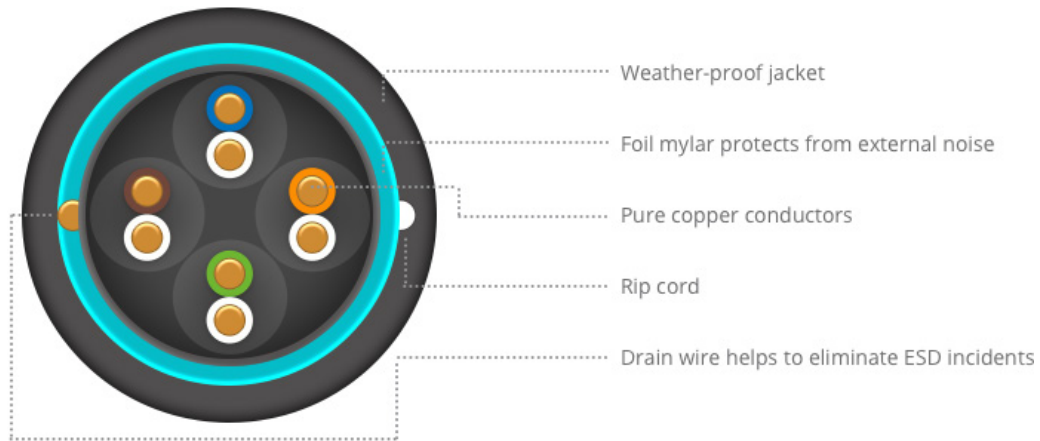
LigoWave



OUTDOOR CABLE

professional CAT5E network cable

Cable structure

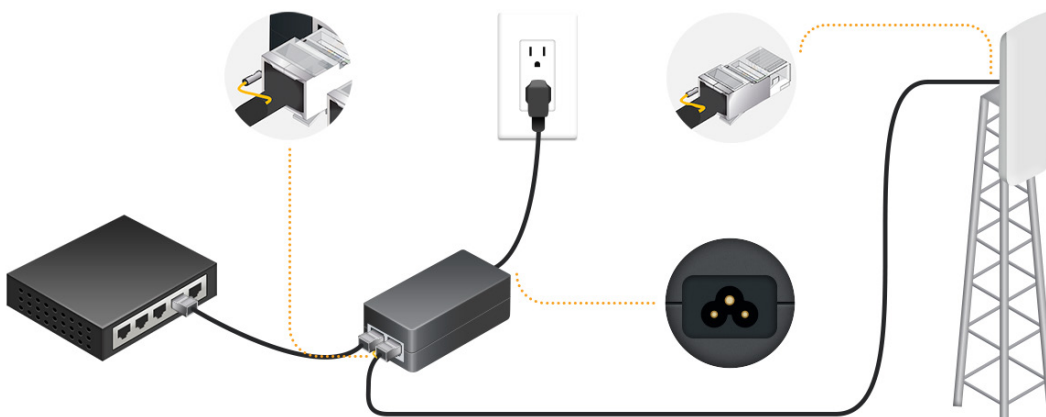


Performance

LigoWave's Outdoor Cable is designed according to TIA/EIA-586C.2 standards to ensure reliable transmission of data for up to 1 Gbps speeds.

Protection

When Outdoor Cable is used with shielded connectors and a grounded PoE adapter (provided with all LigoWave wireless products) Outdoor Cable will help to protect the wireless equipment from ESD (electrostatic discharge) incidents.



Reliability

Harsh weather conditions won't deter Outdoor Cable. Tested under extreme climate conditions to ensure reliable and fast data transmission for years.

High quality

High quality copper conductors (0.51 mm) ensure reliable and fast data and power transmission even in lengthy applications.

Shielded Outdoor cable connectors

Shielded Outdoor cable connectors are designed for professional outdoor installations to help reduce ESD incidents. Each connector has a crimp lug for connection of the drain wire.



OUTDOOR cable specifications

Cable	CAT5E, shielded
Ethernet speed support	Up to 1 Gbps
Conductor wire gauge	24 AWG
Conductor material (mm)	Solid bare copper
Conductor diameter (mm)	0.51 ± 0.01
Insulation type	High-density PE
Insulation thickness (mm)	Avg: 0.245; min: 0.23
Insulation diameter (mm)	1.0 ± 0.02
Separation (polyester wrapping)	125% Coverage
Cable shield (aluminum foil)	100% Coverage
Anti-ESD drain wire	0.4 mm CCS
Rip cord	750D nylon yarn
Jacket material	PE
Jacket thickness (mm)	Avg: 0.55; min: 0.45
Jacket outer diameter (mm)	6.1± 0.3 mm
Jacket color	Black
Operating temperature range (°C)	-20°C (-4 F) to 60°C (149 F)
Average energy transmission loss (18V, 100m)	<4%
Regulatory standard compliance	ISO/IEC 11801, TIA/EIA-568C.2

Performance

Frequency (MHz)	Attenuation <dB	RL >dB	NEXT >dB	ELFEXT >dB	PS NEXT >dB	PS ELFEXT >dB	DELAY <dB
1	1.95	20.1	65.3	63.8	62.3	62.8	569
4	4.1	23	56.3	51.7	53.3	48.7	552
8	5.8	24.5	51.8	45.7	48.8	42.7	546.7
10	6.5	25	50.3	42.8	47.3	40.8	545.4
16	8.2	25	47.3	39.7	44.2	36.7	543
20	9.3	25	48.5	37.7	42.9	34.7	542
25	10.4	24.3	44.3	35.8	41.3	32.8	541.2
31.25	11.6	23.6	42.9	33.9	39.9	30.9	540.4
62.5	17	21.5	38.4	27.8	35.4	24.8	538.6
100	22	20.1	35.3	23.8	32.3	20.8	537.6



OUTDOOR CABLE